



83 Silvester Road, Weldon Park, Corby, NN17 3FX



£350,000

This beautifully presented home offers an outstanding opportunity for discerning buyers seeking a immaculately presented executive home, combining style, space, and practicality in equal measure.

Occupying a desirable position within the highly regarded Weldon Park development, this impressive four-bedroom detached residence has been thoughtfully designed to accommodate the demands of modern family living. The property boasts a well-balanced layout, with generous and versatile accommodation throughout, creating an inviting and comfortable environment for both everyday life and special occasions.

Upon entering the ground floor, you are welcomed by two substantial reception rooms, each offering flexible use as elegant sitting and dining spaces or more relaxed family areas, ideal for both entertaining guests and unwinding in comfort. The well-appointed breakfast kitchen serves as the heart of the home, providing ample space for casual dining and day-to-day living. This is complemented by a separate utility room, ensuring additional convenience, alongside a neatly presented cloakroom.

To the first floor, the property continues to impress with four well-proportioned bedrooms, three of which are generous doubles. The principal bedroom enjoys the luxury of its own en-suite shower room, offering a private retreat, while the remaining bedrooms are served by a contemporary and tastefully finished family bathroom.

- Immaculate presentation
- Walking distance to numerous amenities.
- Beautifully sunny rear garden
- Study/Playroom/Dining room.
- Utility room.
- Modern development
- Walking distance to schooling
- Single garage with tandem driveway.
- Open plan Kitchen/family room.
- Downstairs Cloakroom.

Entrance Hall

Light and airy entrance leading to the kitchen, lounge and study.

Lounge

13'2" x 10'9" (4.03 x 3.28)

Beautifully decorated and filled with light, radiator and tv point.

Study/Dining room.

10'9" x 9'10" (3.29 x 3.00)

Currently used as a home office with window to front elevation.

Kitchen/Family room

20'3" x 9'6" (6.18 x 2.90)

Amazing open space creating the perfect family room, patio doors leading to the garden and internal door leading to the utility room.

Fully fitted kitchen with both base and eye level units with numerous built in appliances.

Utility room.

External door to garden and fitted with







washing machine and dryer, gas combi boiler to wall.

Downstairs cloakroom.

Double glazed window with basin and low level cistern.

Tastefully decorated and leading off from the utility.

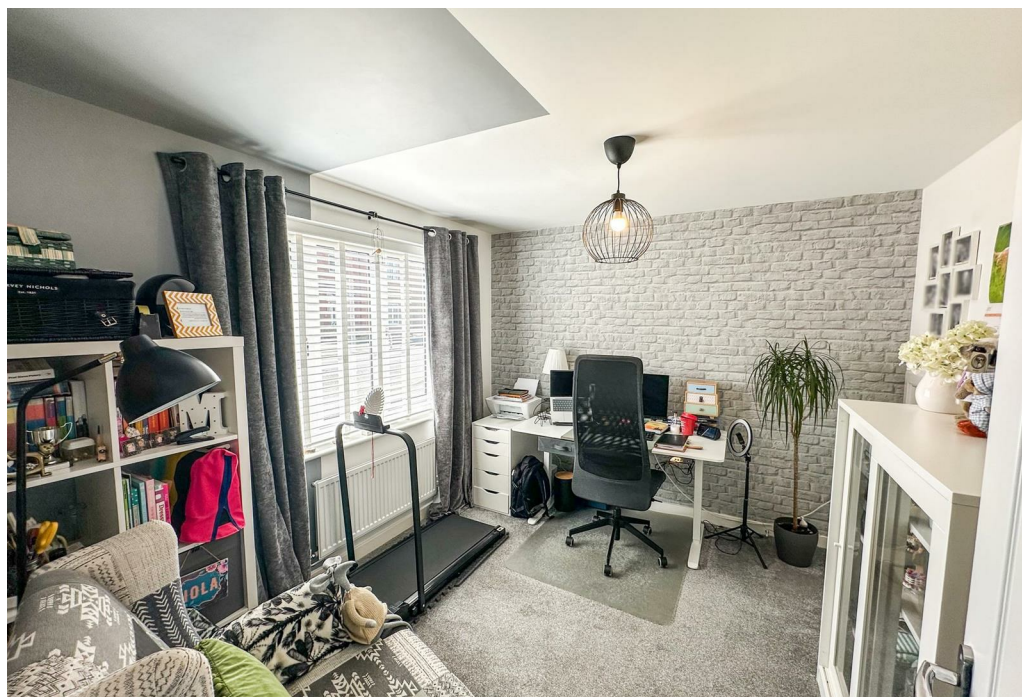
first floor landing

Spacious and light, leading to all bedrooms and family bathroom.

Bedroom one.

12'0" x 11'5" (3.68 x 3.49)

Beautifully presented and decorated with door leading to the en suite, double glazed window to front elevation and radiator.





En suite

Shower room with low level cistern and hand basin, radiator and window to side.

Bedroom two.

12'8" x 11'6" (3.88 x 3.51)

Double room with window to front elevation and radiator under window.

Bedroom three.

9'10" x 8'11" (3 x 2.74)

Currently used as a fitting room but still would make a perfect third bedroom, double glazed window and radiator.





Bedroom four/dressing room.

8'2" x 7'9" (2.51 x 2.37)

Currently used as a dressing room fully fitted out with wardrobes and shoe racking.

Outside

Single garage with driveway for two cars.

Rear garden is predominantly laid to lawn with patio areas and shrubbery in borders,

Front garden is a manicured strip at the entrance.





83 silvester

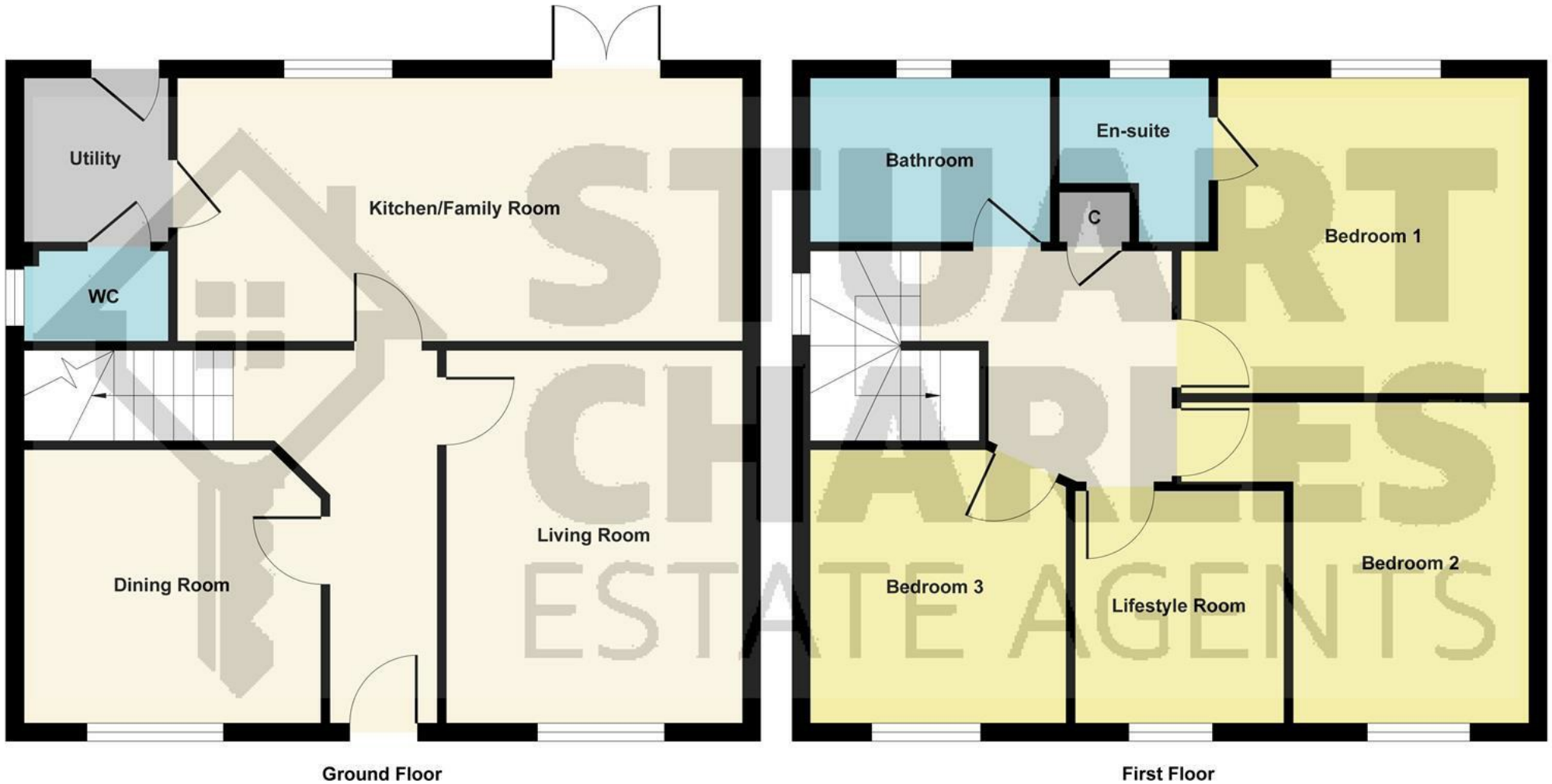


Illustration for identification purposes only, measurements are approximate, not to scale.

Produced by Elements Property



Energy Efficiency Rating		Current	Potential
Very energy efficient - lower running costs			
(92 plus) A			
(81-91) B		82	87
(69-80) C			
(55-68) D			
(39-54) E			
(21-38) F			
(1-20) G			
Not energy efficient - higher running costs			
England & Wales		EU Directive 2002/91/EC	